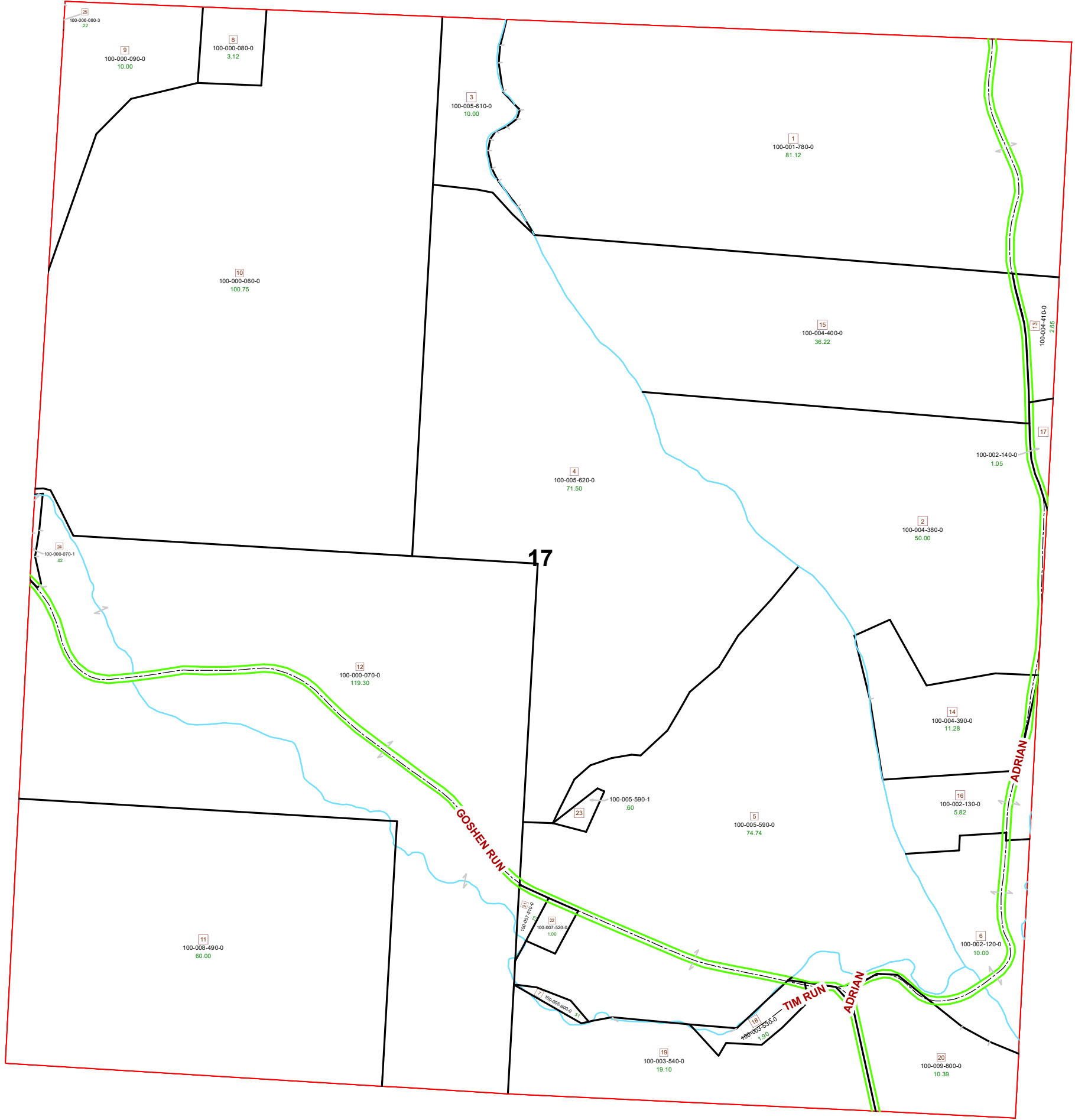
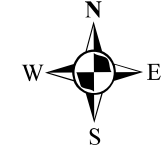


MARION TOWNSHIP SECTION 17 R12 TWP 8 MORGAN COUNTY, OH



PIN	Owner	VOL	PAGE	LegalDescr	Acres
100-000-070-1	CARR BARRY E & RHONDA K	OR113	697	R12 T08 S17 SD 24	0.421
100-004-390-0	COLER HOLDINGS LTD	OR134	669	R12 T08 S17 SD 14	11.28
100-002-120-0	FRAZIER DIXIE ANN	OR97	75	R12 T08 S17 SD 6	10
100-002-130-0	FRAZIER DIXIE ANN	D.V 79	75	R12 T08 S17 SD 16	5.82
100-002-140-0	FRAZIER DIXIE ANN	OR97	75	R12 T08 S17 SD 17	1.05
100-001-780-0	GOSHEN RUN FARMS LLC	OR229	1709	R12 T08 S17 SD 1	81.12
100-009-800-0	JACKSON AARON & ADAM & ADESSA	OR190	236	R12 T08 S17 SD 20	10.39
100-003-540-0	JACKSON DONALD STEVEN & RHONDA G	D.V 175	356	R12 T08 S17 SD 13	19.1
100-003-530-0	JACKSON DONALD STEVEN & RHONDA G	D.V 175	356	R12 T08 S17 SD18	1.9
100-000-070-0	MILLER HENRY L & POLLY D	OR68	480	R12 T08 S17 SD 12	119.299
100-000-060-0	MILLER HENRY L & POLLY D	OR68	480	R13 T08 S17 SD 10	100.75
100-000-080-0	MILLER HENRY L & POLLY D	OR68	480	R12 T08 S17 SD 8	3.12
100-000-090-0	MILLER HENRY L & POLLY D	OR68	480	R12 T08 S17 SD 9	10
100-005-600-0	MILLER LEVI H & ESTHER	D.V 165	272	R12 T08 S17 SD 7	0.51
100-005-590-0	MILLER LEVI H & ESTHER	D.V 165	272	R12 T08 S17 SD 5	74.74
100-005-620-0	MILLER LEVI H & ESTHER	D.V 165	272	R12 T08 S17 SD 4	71.5
100-005-610-0	MILLER LEVI H & ESTHER	OR165	202	R12 T08 S17 SD 3	10
100-005-590-1	PAROCHIAL SCHOOL BOARD OF GOSHEN			R12 T08 S17 SD 23	0.606
100-004-380-0	SHAW CHRISTOPHER A	D.V 200	24	R12 T08 S17 SD 2	50
100-004-410-0	SHAW CHRISTOPHER A	D.V 200	24	R12 T08 S17 SD 13	2.65
100-004-400-0	SHAW CHRISTOPHER A	D.V 200	24	R12 T08 S17 SD 15	36.22
100-007-520-0	SIMMONS LOIS	OR155	721	R12 T08 S17 SD 22	1
100-007-510-0	SIMMONS LOIS	OR155	721	R12 T08 S17 SD 21	0.734
100-008-490-0	STARKEY VALERIE Y	D.V 196	616	R12 T08 S17 SD 11	60



Boundaries	
----- Hidden	--- ROW
--- Hydro	--- Section
--- Roads	--- Lot
--- County	--- Parcel
----- Township	--- Parcels



Disclaimer: The information that these maps contains is for reference purposes only. Please bring any erros to the attention of the Engineer's Office staff.
Thank you

Source: Morgan County Engineer's Office
Author: Marcia Wolfe
Date: 7/10/2020

